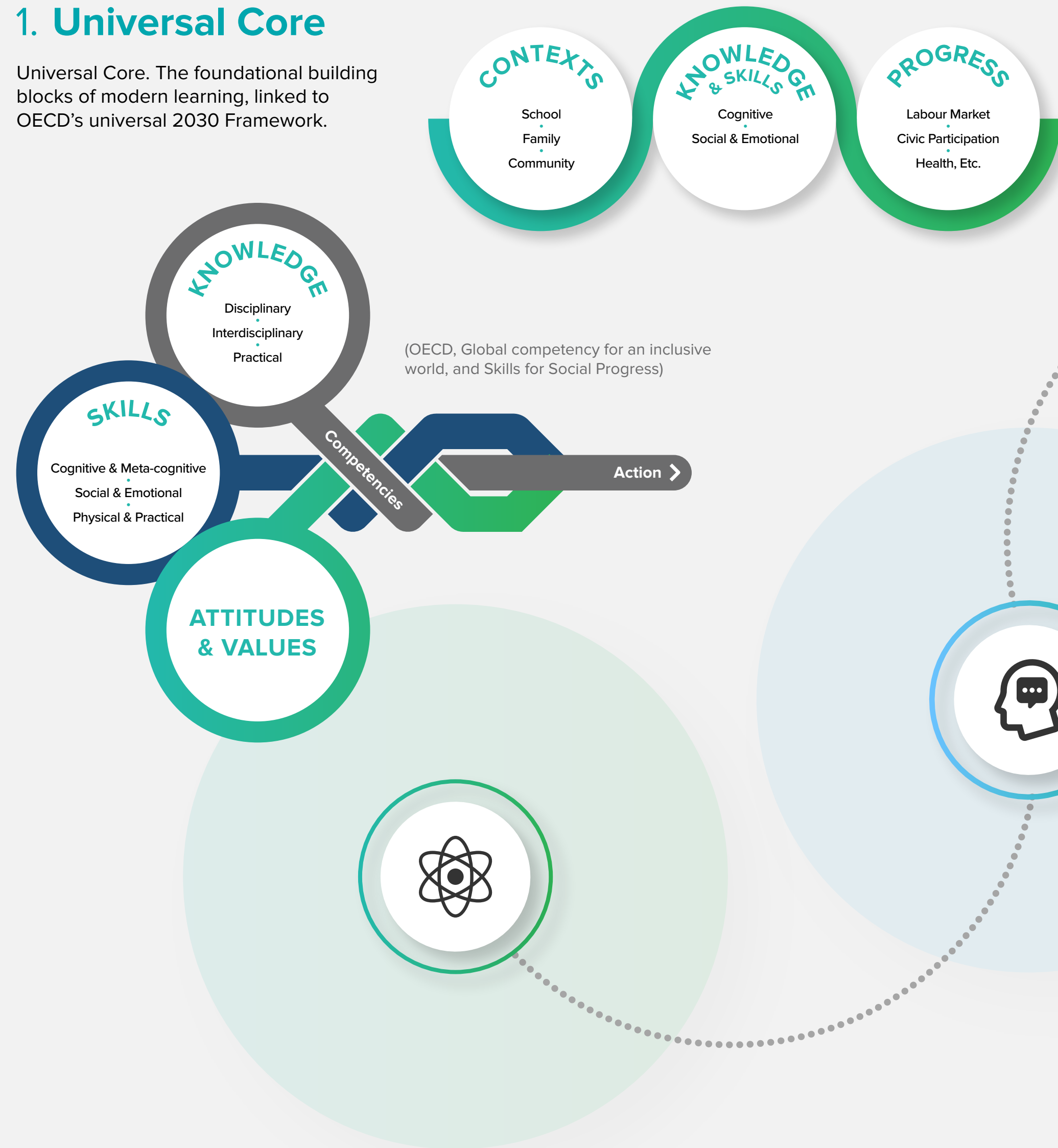


1. Universal Core

Universal Core. The foundational building blocks of modern learning, linked to OECD's universal 2030 Framework.



3. Brighton learner layer

Local priorities. What is important for Brighton and its citizens?

Aligned with key existing frameworks and initiatives such as City Employment and Skills Plan

Domains:

Health and Wellbeing, and Creativity and City of Ideas

Skills:

such as creativity, teamwork, communication, problem solving

Dispositions:

such as resilience, self-awareness, curiosity, playfulness, responsibility

2. City of Learning layer

The capacities and capabilities that characterise what it means to be a learning citizen and a learning place.

- > Interpersonal, social and emotional
- > Civic and global
- > Creative and entrepreneurial
- > Ethic of craft and business awareness
- > Digital

4. Strategic layer

Pathways that link into and leverage local, regional and national needs and strategic priorities.

- > Post-16 Skills Plan
- > Apprenticeships
- > Council plans and strategies
- > Local Enterprise Partnership strategy
- > Employer needs
- > Community needs